



Decorative Concrete

SHELLPLATE
ABRASION RESISTANT POLISHED CONCRETE & more



www.sheltech.co.in





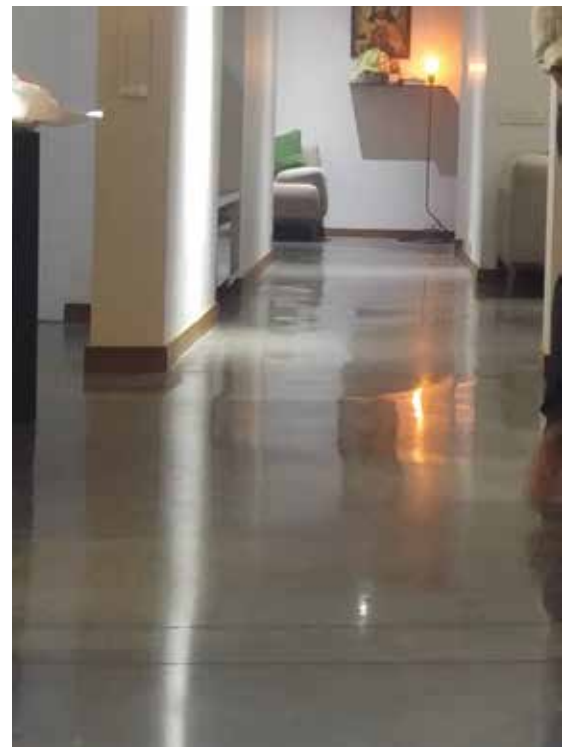
what we do!



The transformation of concrete into decorative concrete is achieved through the use of a variety of materials that may be applied during the pouring process or after the concrete is cured, these materials and/or systems include but are not limited to stamped concrete, acid staining, decorative overlays, polished concrete, concrete countertops, vertical overlays and more. .

We are offering a highly qualitative and comprehensive range of back-to-back enduring solutions with respect to the Industrial, General and Architectural Construction industry.

Our extremely proficient and skilled team members are constantly striving to generate the fruitful results for both the organization as well as the customers. They even provide customized solutions to make sure that the customers are fully satisfied with up to the mark services that they are.



SHELLPLATE - Polish Concrete

A lot of care goes into flooring. Whether is industrial, commercial, showroom or residential. And the checklists are long. Will it be tough and durable? Scratch and abrasion resistant? Will it involve extra investment? Will stains ruin it? Will it be stylish and accent the mood of the premises? Will it be green?

Well, here's a flooring solution which scores high on all the long check-list points. ShellPlate. ShellPlate process is most ideal for any environment - heavy machinery factory floors, food processing facilities, pharma, showrooms, hospitals, offices, commercial spaces and also for residences too!

It's Sturdy! It's Economical! It's Concrete

ShellPlate process is an all new concept. Polished concrete is created by treating the already laid surface concrete with chemical densifier.

The ShellPlate process removes the top part of the surface of the old concrete floor (including any patchy, partial, or whole coatings), and hardens the exposed

surface beneath. This is then ground progressively to fine finish with advanced grinding tools to give the kind of finish you want - matt or glossy or neutral.

Thus floors gain heavy duty sturdiness corrosive and abrasion resistance, stain resistance, eco-friendliness and provide lasting value for money.



ShellPlate Advantages

ShellPlate offers your more benefits and advantages, compared to conventional flooring options available.

Apart from its physical properties which will win you over, it drastically reduces your expenses on flooring.

That's not all. It's absolutely 'green'. Read on to know more about ShellPlate.

Heavy-duty toughness

Unlike common concrete which deteriorates in strength over the years, the ShellPlate treatment on concrete enhances abrasion resistance and impact resistance multifold. So there is no more deterioration like rain damage, surface stress, delamination, improper curing, curled cold joints, joint shoulder failure and the like. That is not fall. The ShellPlate processed concrete floor exhibits exceptional resis-

tence to scratches, stains, tyre marks and many other similar threats which floors are exposed to.

Lasting durability, thus highly economical

The ShellPlate treatment defies the ageing, the biggest threat concrete faces. Not only that. The floors turn smooth, which makes it easier to clean. This will lead to less wear and tear of cleaning equipment.



Green and Sustainable

Our processes use an existing product, your slab. The chemicals we treat the floors with are low VOC (Volatile organic compounds), and create no hazardous waste. By using a low VOC sealer on the floor, polished concrete will provide quality air for the occupants. That is not all. Its smooth surface reflects lights in more efficient way, leading to the use of less number of lights. Thus you save a lot on power bills too.

Finish and occupy

The curing time is almost nil. So the areas completed can be put quickly back into service.

Better aesthetics

ShellPlate treatment can offer you the kind of fine aesthetic looks which complement the ambience of your space. There are wide options of finishers to choose from glossy, matt and neutral.

Call us now to know how this revolutionizing concept can change the way you looked at your space and profits.



ShellPlate is ideal for:

- Factories
- Showrooms
- Warehouses
- Retail
- Commercial spaces
- Restaurants
- Hospitals
- Condos
- Schools
- Convention Centers
- Industrial
- Outdoor

ShellPlate Advantages

- 400% higher abrasion resistance
- More impact resistance
- Cost-effective
- Increased reflectivity
- 100% dust free
- Enhances the beauty of the floors
- Eliminates moisture-related adhesive failures
- Does not support combustion; no toxic flames or smoke
- Conforming to green building standards



STAMPED CONCRETE

Stamped concrete that is patterned and/or textured or embossed to resemble brick, slate, agstone, stone, tile, wood and various other patterns and textures. Stamped concrete is commonly used for driveways, patios, sidewalks, ramps, pool decks, and interior flooring.

The ability of stamped concrete to resemble other building materials makes stamped concrete a less expensive alternative to using those other authentic materials such as stone, slate or brick.

There are three procedures used in stamped concrete which separate it from other concrete procedures; the addition of a base color, the addition of an accent color, and stamping a pattern into the concrete. These three procedures provide stamped concrete with a color and shape similar to the natural building material. It also is longer lasting than paved stone, and still resembles the look.

Why Stamped Concrete instead of the original surfaces?

Brick, pavers, and cobbles look great, but since they form a surface of many interlocking pieces, they are susceptible to frost-heave and other changes in the underlying surface. Sometimes this can be good, if you're trying to cover an uneven surface the brick, pavers, stone, or pavers will conform to the surface. But if you have a good, flat and level under-surface, you'll want your concrete to be laid the same way. Reinforcing rods within the stamped concrete help to tie the pavement together and strengthen it.

Also, bricks, pavers, cobbles, etc. allow for weed to grow up through the cracks. Since stamped concrete is a solid, continuous surface, nothing can grow up through the "cracks." As you may already know, the "cracks" in stamped concrete are simply impressions in the concrete that only partially go through the surface.



Benefits of Stamped Concrete

- High Abrasion and Impact Resistance - Increased Comprehensive Strength
- Reduced Maintenance Cost
- Colour Hardener doubles up the concrete surface abrasive value
- Fewer Joints. No growth of weed as no through cracks
- Weather / Stain Resistant when sealed.
- UV Stable - Colors will not fade
- Available in various designs, textures, pattern & Colours
- Increased water resistance
- Minimum dusting
- Lower water permeability due to denser concrete
- Equally Levelled Floor
- Minimized crack formation
- Top part of concrete has the max compressive strength due to lowest water cement ratio
- Rapid completion

PATTERNS



EUROPEAN FAN



GARDEN STONE



GRAND ASHLAR STONE



LONDON COBBLE



MEDIUM ASHLAR STONE



MONTE CARLO



OLD GRANITE TEXTURE



RANDOM STONE



ROMANA COBBLE STONE



ROYAL ASHLAR STONE

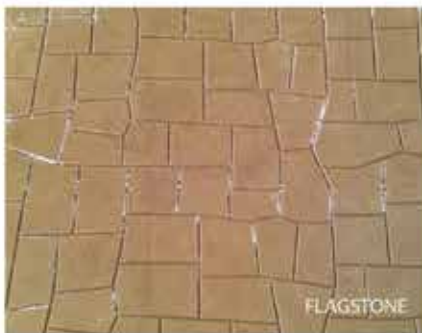


SAND STONE TEXTURE



WOODEN PATTERN

KIDS ZONE



FLAGSTONE



HERRINGBONE USED BRICK



MINI EUROPEAN FAN

COLOUR CHART

INTEGRAL COLORS

				
BAY GREEN	COOL GRAY	THISTLE BROWN	APRICOT	RED CLAY
				
GOLDENROD	PAPRIKA	MAIZE	SIERRA ROSE	GUNMETAL GRAY
				
BAY GRANOLA	CORNSTALK	MIST GREEN	CAMEL	SALMON
				
MAUVE	SUNSET	LIGHT COPPER	SEAL GRAY	LIGHT MELON
				
RHUBARB	BUCKSKIN	SIENNA	QUAIL GRAY	CHAMOIS

COLOR HARDENER / RELEASE AGENT COLORS

				
NATURAL GRAY	FRENCH GRAY	SHAILE GRAY	COBBLESTONE GRAY	SUNSET GRAY
				
BROWNSTONE	FOREST BROWN	RUST BROWN	MEXICAN TILE	AUTUMN BROWN
				
HARVEST AMBER	SONORA TAN	CARAMEL	DESERT TAN	CHARGREEN
				
LIGHT BROWN	FRANCISCAN	BRICK RED	COCO PLUM	BOCA PINK
				
COQUINA	CREAM	SAND	NICKEL GRAY	STEEL BLUE

ACID STAIN COLORS

				
CARMEL TAN	COFFEE	EBONY	SEA BLUE	ANTIQUERED
				
ILONEY GOLD	LEAF GREEN	TERRA COTTA		

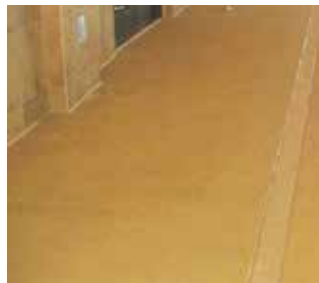
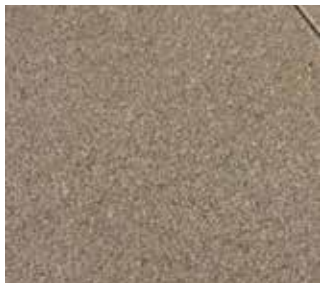
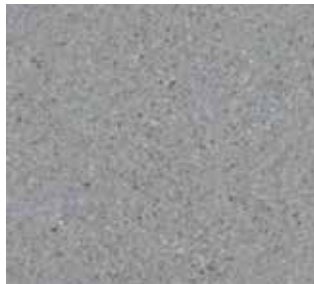


SAND WASH SYSTEM

Sand Wash Texture is designed for outdoor applications where an alternate to a Sand Blasted Natural Stone finish is required. Utilizing specialized Colour Hardeners, additives, topical treatments and advanced application procedures, Sand Wash Texture resembles sand blasted Natural Stones. Used in combination with a variety of color and staining options, Sand Wash Texture creates consistent texture and durable hard-scapes ideal for plazas, walkways, shopping centres, schools and more.

Basic Application Information

- Concrete is laid to the accurate levels maintaining the required slopes in Form Work
- Then Surface is finished using magnesium Bull Trowels
- Color Hardener is applied to the surface of plastic concrete in Three Heavy Dozes
- Colour Hardener is finished using steel Bull Floaters and some times with hand steel floaters using Knee pads.
- Additional finishing is undertaken to reduce lap lines and trowel licks in finished surface.
- Next Day, The concrete surface is etched & Control Joints are provided
- Stains are applied if specified.
- Final stain resistant treatment completes the process & then Pattern grooves are provided.



Features and Benefits

- Resembles Natural Stone
- Less Installation Time / Rapid Completion & Equally Levelled Floor
- Conserves natural resources thus environmental friendly (Green Buildings)
- High Abrasion and Impact Resistance – Increase Comprehensive Strength
- Reduced Maintenance Cost - Durable for sustainable design
- Monolithic Concrete Slab
- Increased surface and slip resistance
- Permanent, lightfast colors & UV Stable
- Colors will not fade
- Economical & Cost eective
- Fewer Joints. No growth of weed as no through cracks





STAINED CONCRETE

For Old or New Concrete

Stains which are used unique line of water based, Non-Acid Polymer bonded stains that penetrate into the concrete surface to produce vibrant long lasting UV Resistant stains that enhance any Concrete surface.

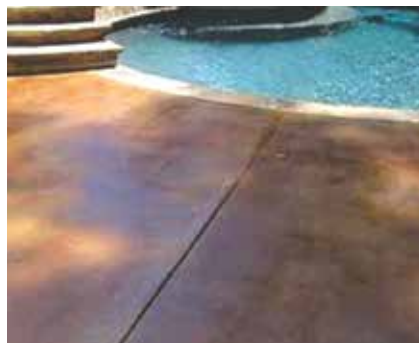
Environmental Impact:

Stains- contain no arsenic, lead, or mercury and very low organic solvents that conform to all VOC regulations.

Application: The Concept Concrete-Stains are applied to any clean, cured concrete surface or concrete overlay surface. Once dried and sealed, the various colors that are applied become a permanent part of the concrete with lasting beauty.

Benefits

- UV stable: Once dry and sealed, the Everlast-Stains remain stable and resistant to weather and sun light for years.
- A wide range of colors: The Everlast-Stains at various dilutions and combinations can offer a multitude of colors and shades for any desired effect in beautifying plain concrete surfaces. This includes a true black and white.
- Ease of application: The Everlast-Stains do not require any neutralizing or labor intensive scrubbing. Once dry they can simply be sealed. Half of the labor is eliminated.
- Economical: The stain cover up to 200 Ft²/gal and one coat is usually sufficient.
Long shelf life: The Everlast-Stains can be stored in the original bottle for up to one year with no loss of intensity.





COLOUR CONCRETE

Colourful till the end MIXING OF COLOUR PIGMENT IN GREEN CONCRETE. Concrete can be coloured with the addition of a pigment into the concrete mix while patterns are achieved with inlaid timber strips forming borders around individual areas.

Colour Concrete can be Finished as

- IPS Finish Using Power Floater
- Broom / Brush Finish
- Sponge Finish
- Stamping.

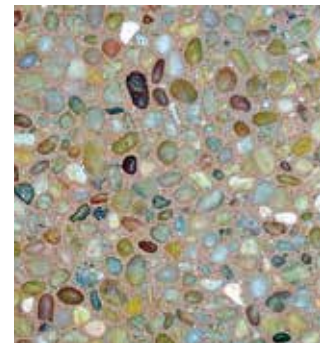
USAGE AREAS:

- Concrete Flooring for both cast-in-situ and precast type
- Landscape Areas
- Pathways & Gangways for residential, commercial & Industrial buildings
- Parking bays & Garages
- Footpaths & Cycle/two wheelers tracks
- Walkways & Driveways
- Pool Decks & Spa surrounds
- Food Courts
- Patio's & Porches
- Lobby Area



EXPOSED AGGREGATE SYSTEM

The Exposed Aggregate Systems bring the vintage decorative concrete option back into the forefront of the industry with innovative systems, longer-lasting products and a variety of mix designs that combine the durability you need with the beauty you desire. Exposed aggregate have been around since anyone can remember; the practical design option that was never too flashy, sometimes uneven and always lost its appeal as the embedded aggregates "popped out" of the finish over time. But that was then. Today, with new technology and inventive products, novel exposed aggregate finishing options have emerged to breathe new life into the aged decorative concrete technique.



CONCRETE FINISH ON WALL



Our new and innovative finish can be polished to give a smooth mid sheen look or left more matt. Available in several shades of concrete this finish can be used on any scale in interior design to give seamless or jointed work.

Fade to grey and bring the urban underground look to your design with this fast track versatile polished plaster. . In addition to concrete finishes done with cement of Portland, we presented some "faux" concrete samples created with lime plasters and synthetic plasters.

Our distinctive finishes add a touch of elegance and drama to everything from walls and surfaces, to buildings, gardens, atriums and courtyards.

MICROTOP FLOORING SYSTEM

Micro-Top Cutting-edge technology, through the use of a paper-thin concrete medium, providing a coloration system like no other. This state-of-the-art system utilizes a troweled-on cementitious topping that tenaciously bonds to virtually any substrate, including concrete, wood, metal, plastic or asphalt. Not confined to the standard color palette or color limitations of chemical stains, Micro-Top succeeds where other coloring methods have failed. Micro-Top provides a canvas where works of art are graphically produced. Create a unique, visual dialog with your environment –

inside or out – utilizing custom logos, unlimited graphics, swirls of color or marbled hues to reach the perfect color combination.

Micro-Top can be installed as interior flooring, spotted as accent areas, continued up a wall, traversed up the side of a building or applied directly to a street section. From retail centers to theme parks, restaurants to hotels, commercial oces to residential applications, Micro-Top makes a bold statement of individual style and personality. Micro-Top provides a durable, colorfast, high-strength graphic splash to any project.





SHELTECH ENGINEERS, 38/ 2101, Beena Anchumana Road, NH Bye Pass, Edappally, Kochi - 682024.
 Ph : 0484 2343838, Mob : 9447031838, 9846211838. E-mail : info@sheltech.co.in